

**Pearson Edexcel Level 1/Level 2 GCSE (9-1)**

**Friday 24 May 2019**

**Paper Reference 1DT0/1F**

**Design and Technology**

**Component 1: Timbers**

**DIAGRAM BOOKLET**

**Write your name here**

<b>Candidate Surname</b>					
<b>Other names</b>					
<b>Centre No.</b>					
<b>Candidate No.</b>					

FIGURE 1

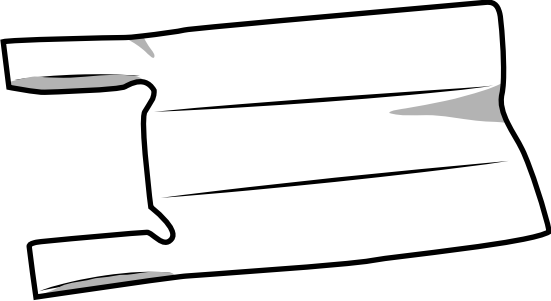
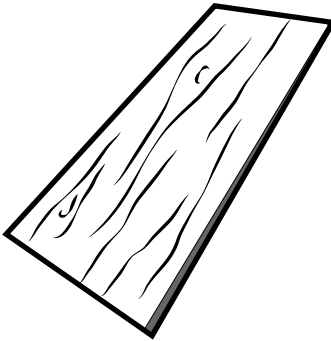
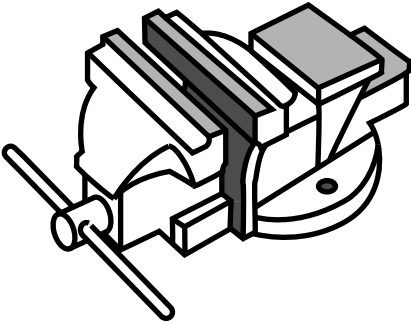

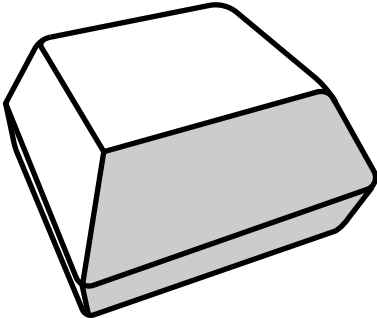
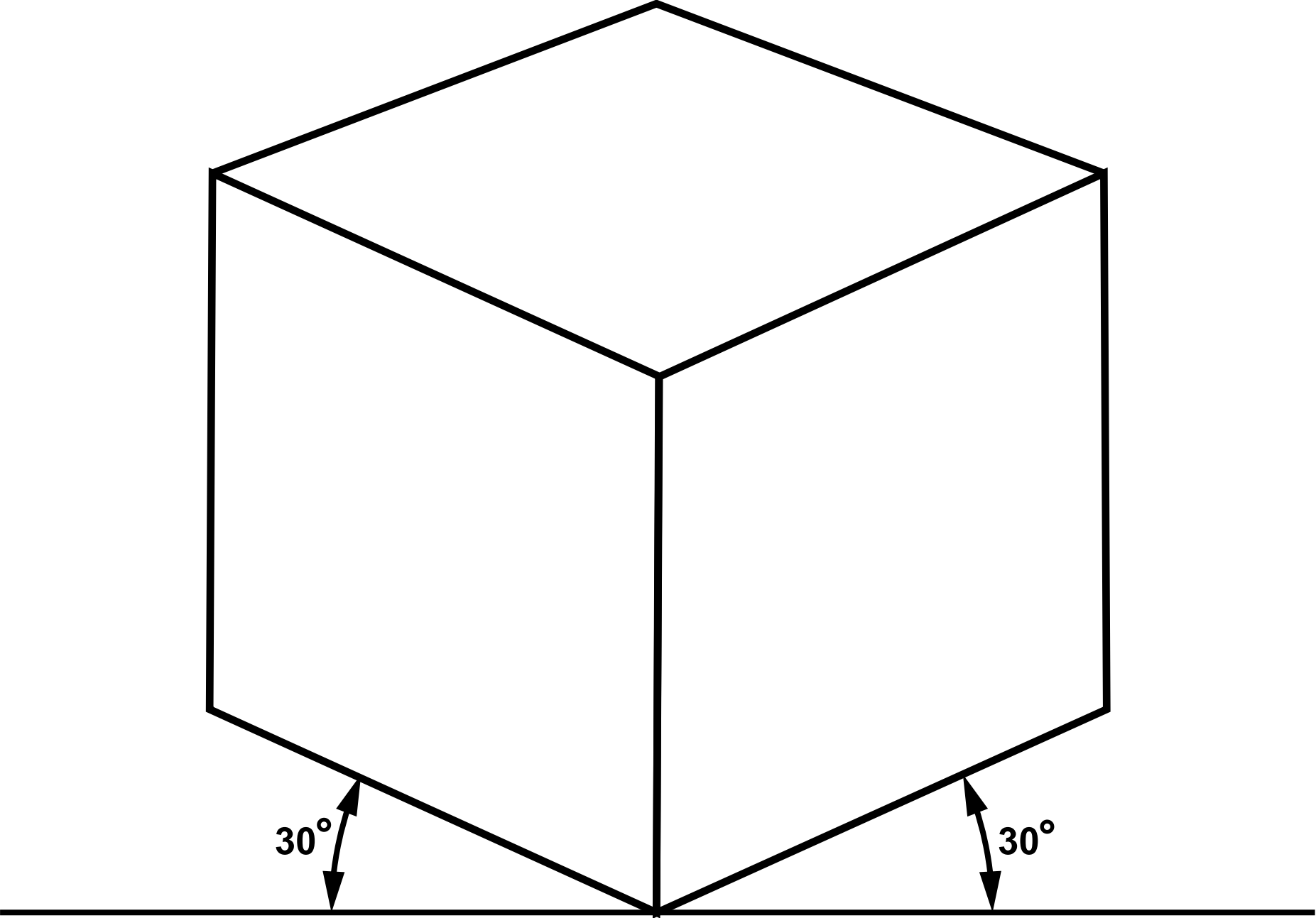
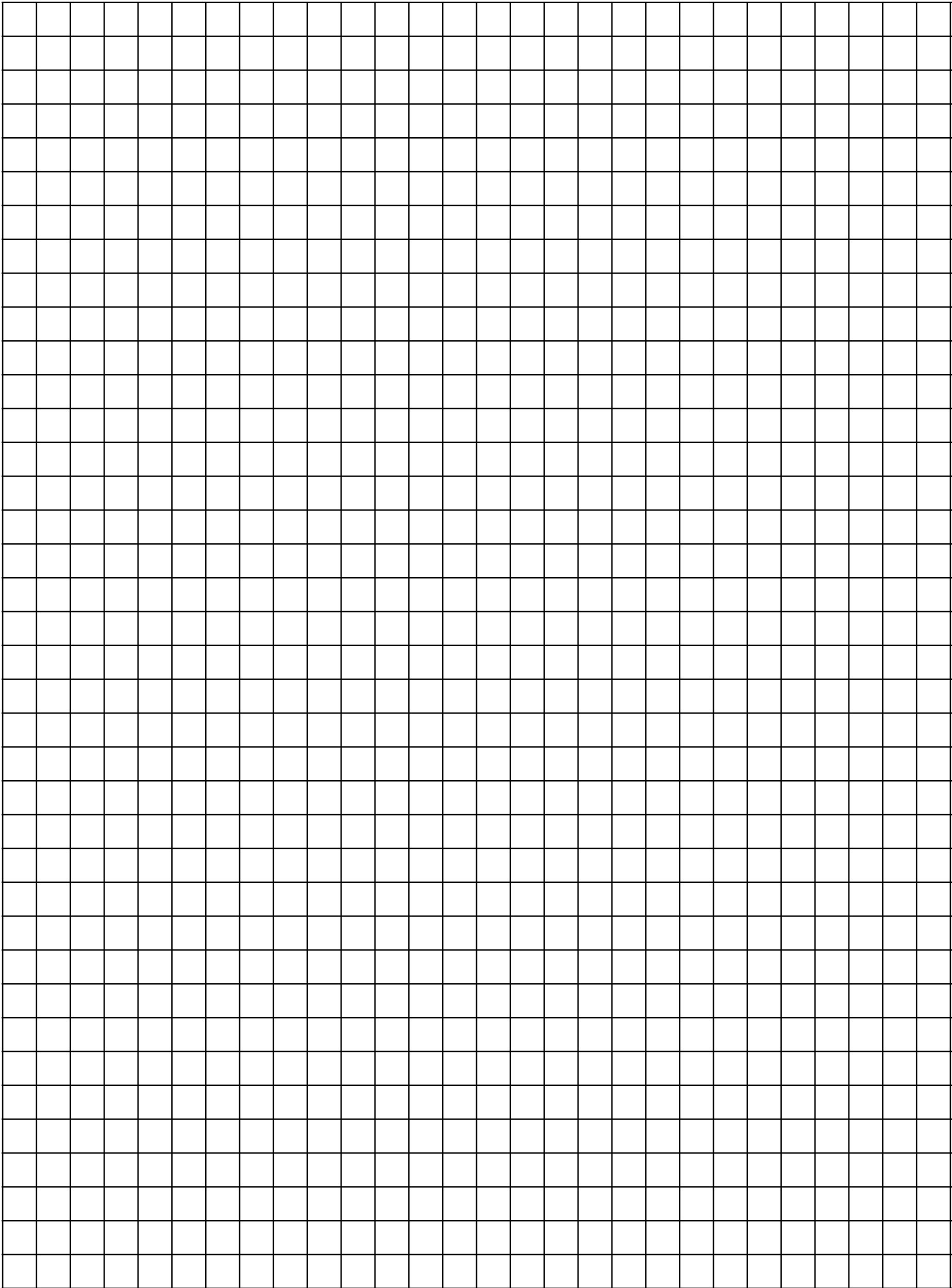
Product	Product material	Property
	Biodegradable plastic shopping bag	Will degrade in soil
	Cedar roof tile	(1) (i) _____
	Cast iron workshop vice	(1) (ii) _____
	Polyester raincoat	(1) (iii) _____
	Solid white board burger package	(1) (iv) _____

FIGURE 3

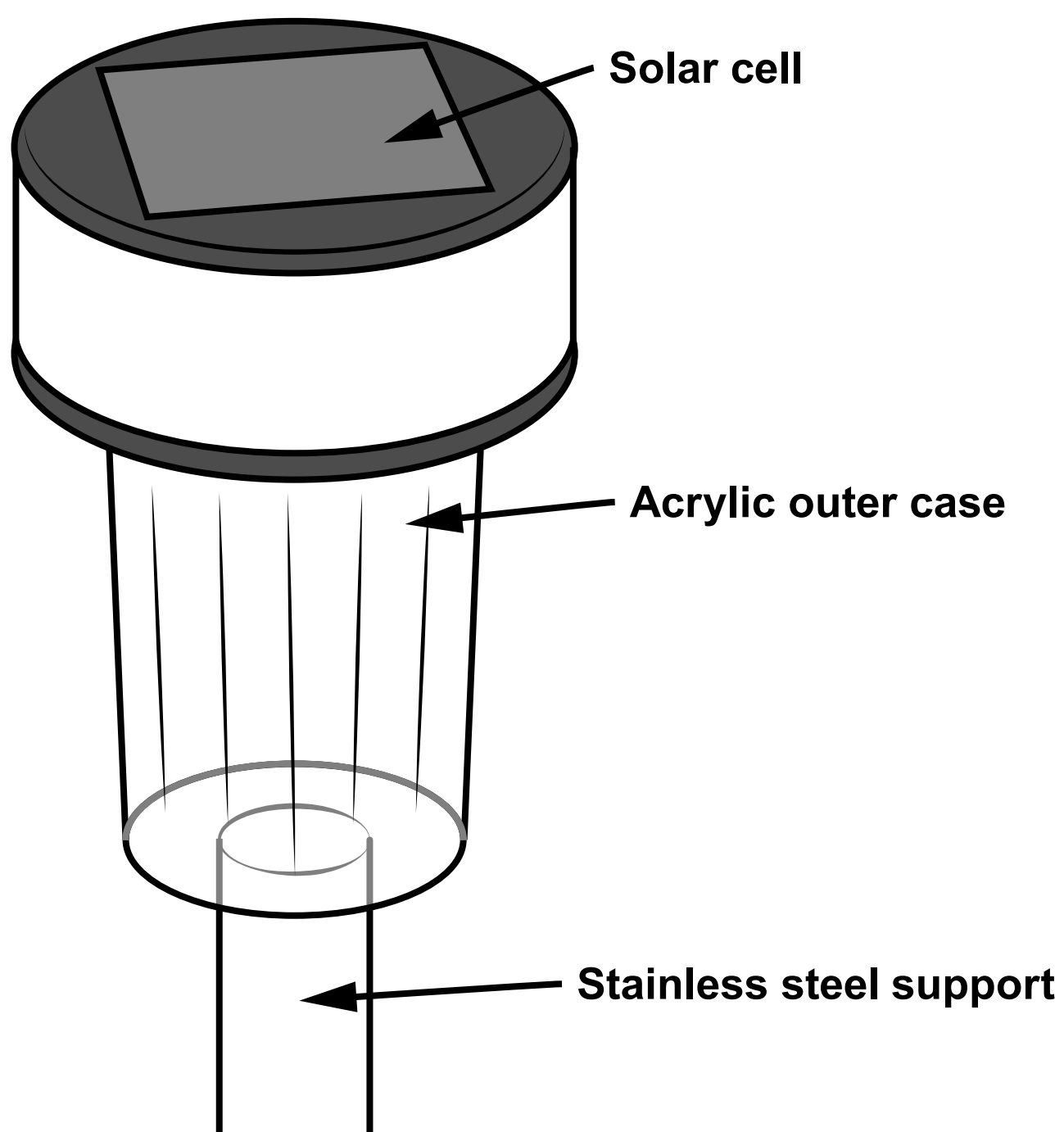


**Question 2 (c)**

**EACH SQUARE REPRESENTS 10 mm**



**FIGURE 4**



**FIGURE 5**

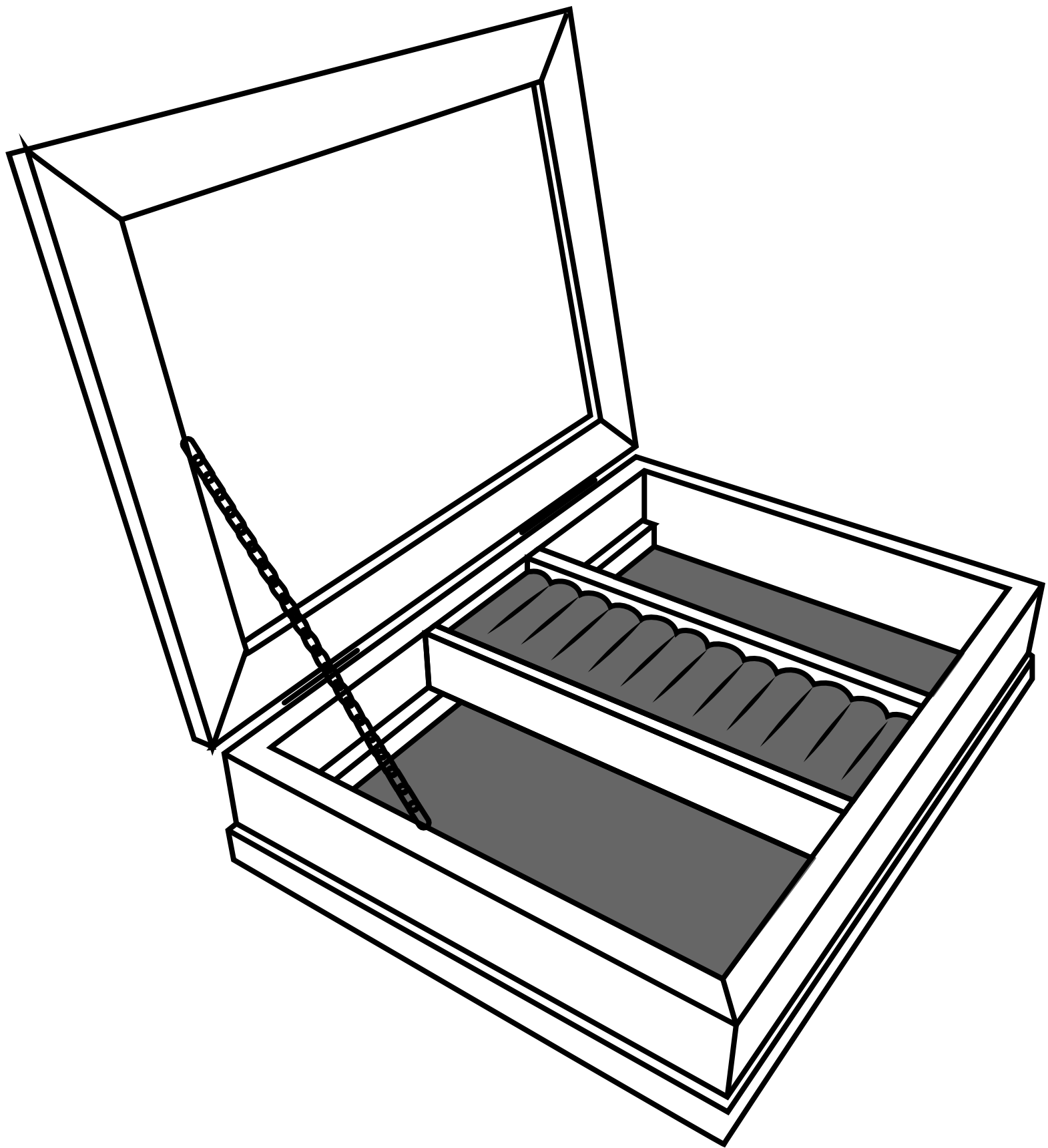


FIGURE 6

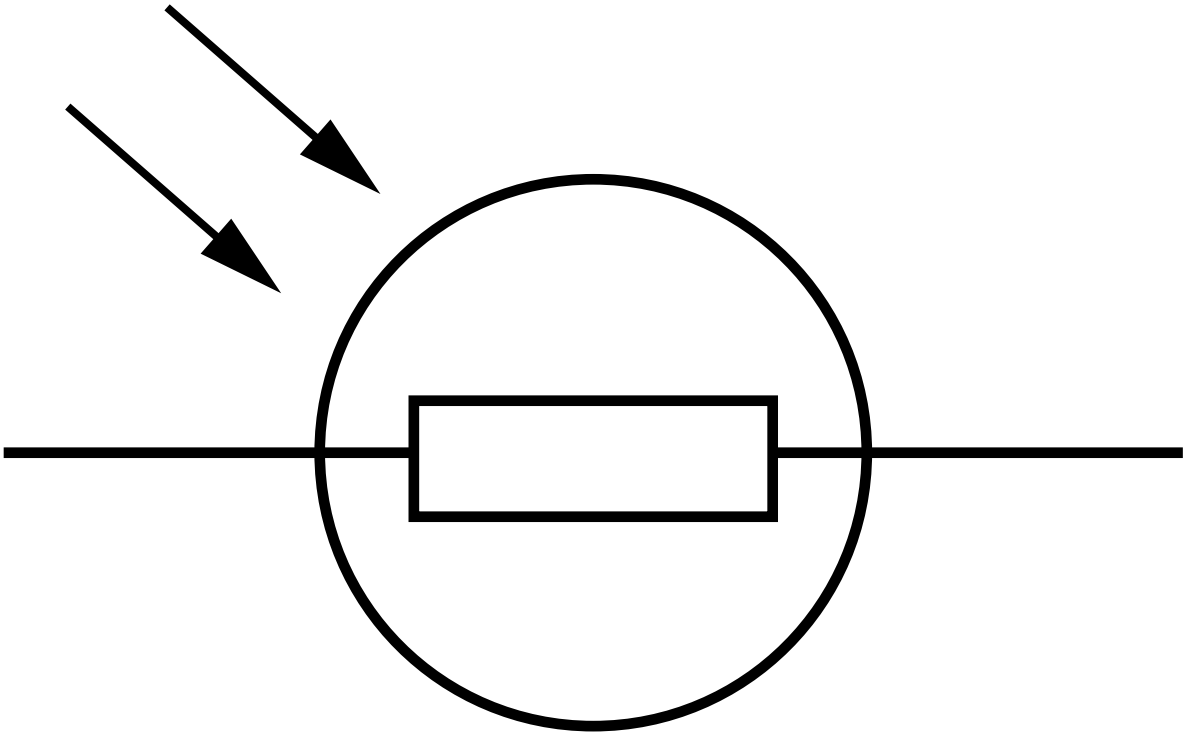
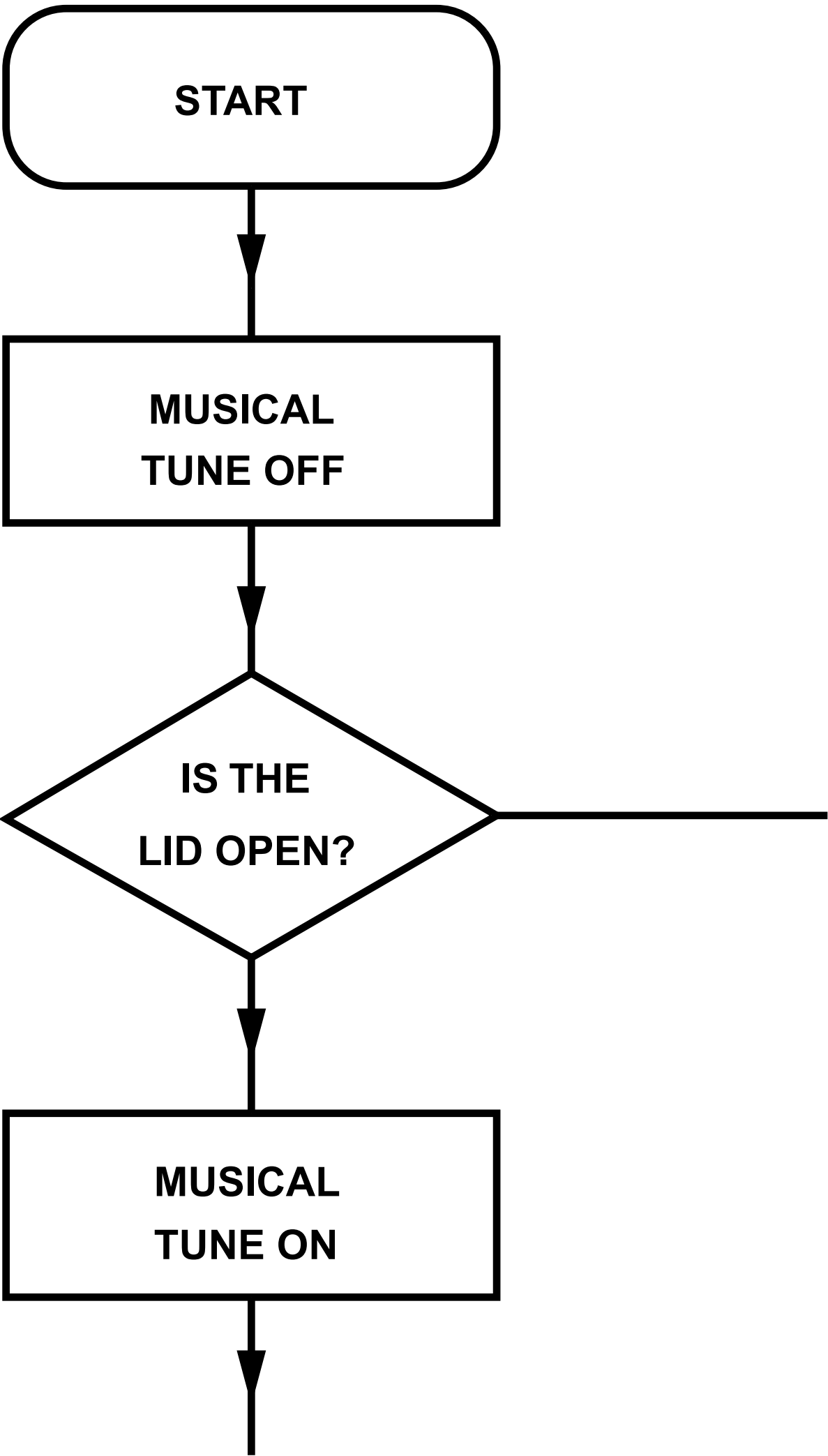


FIGURE 7





Question 4 (b)

Percentage area

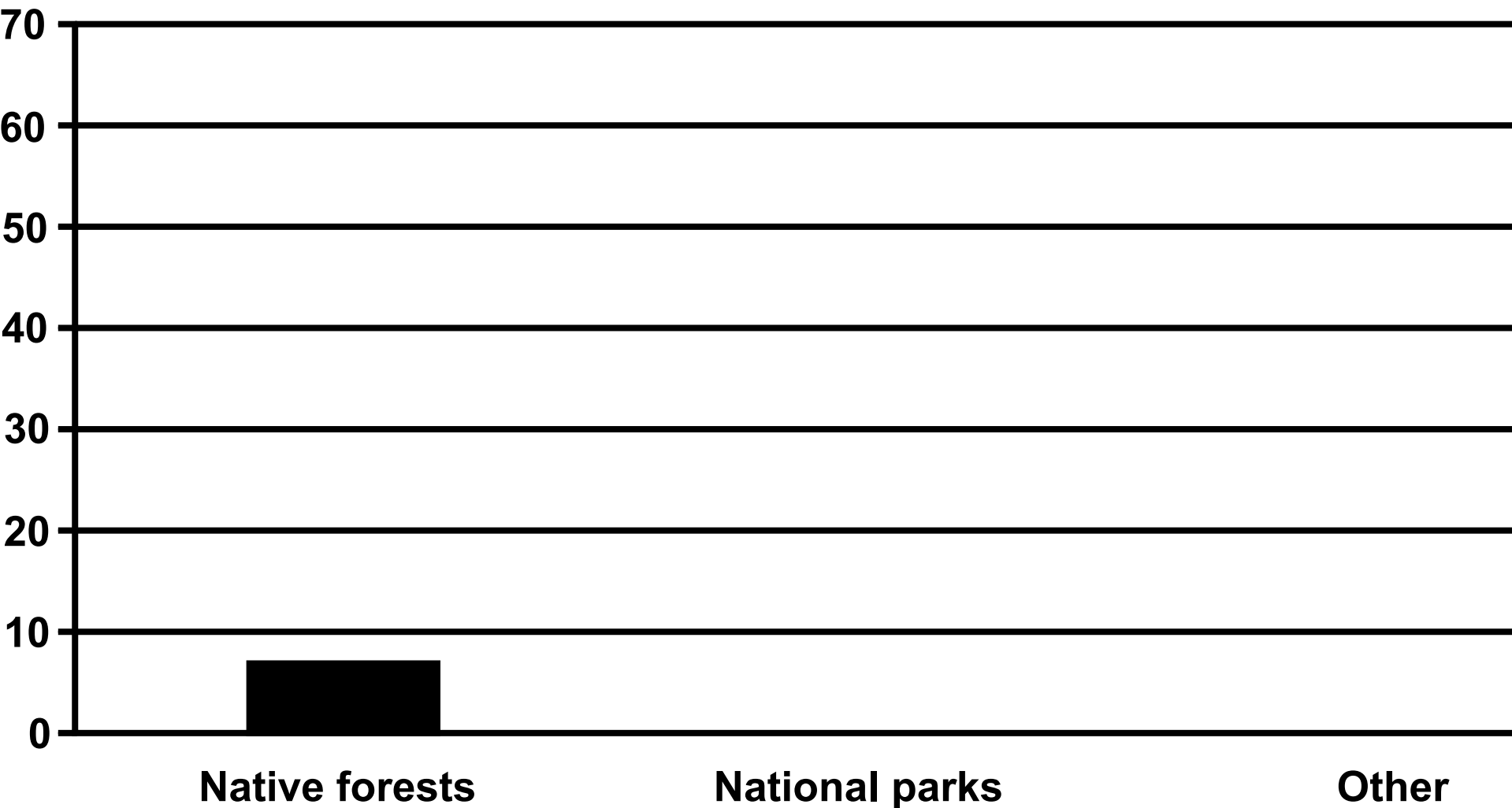
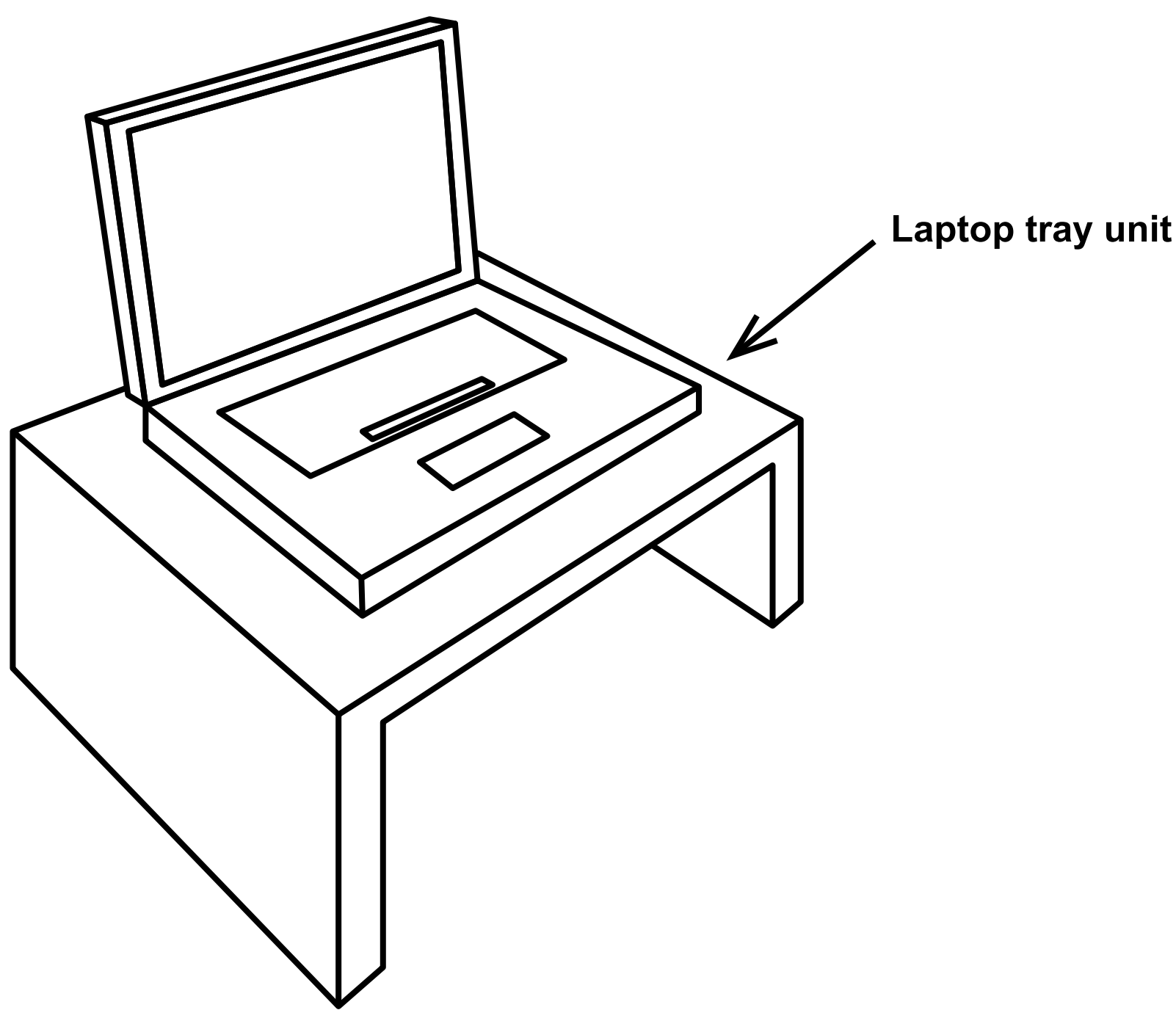
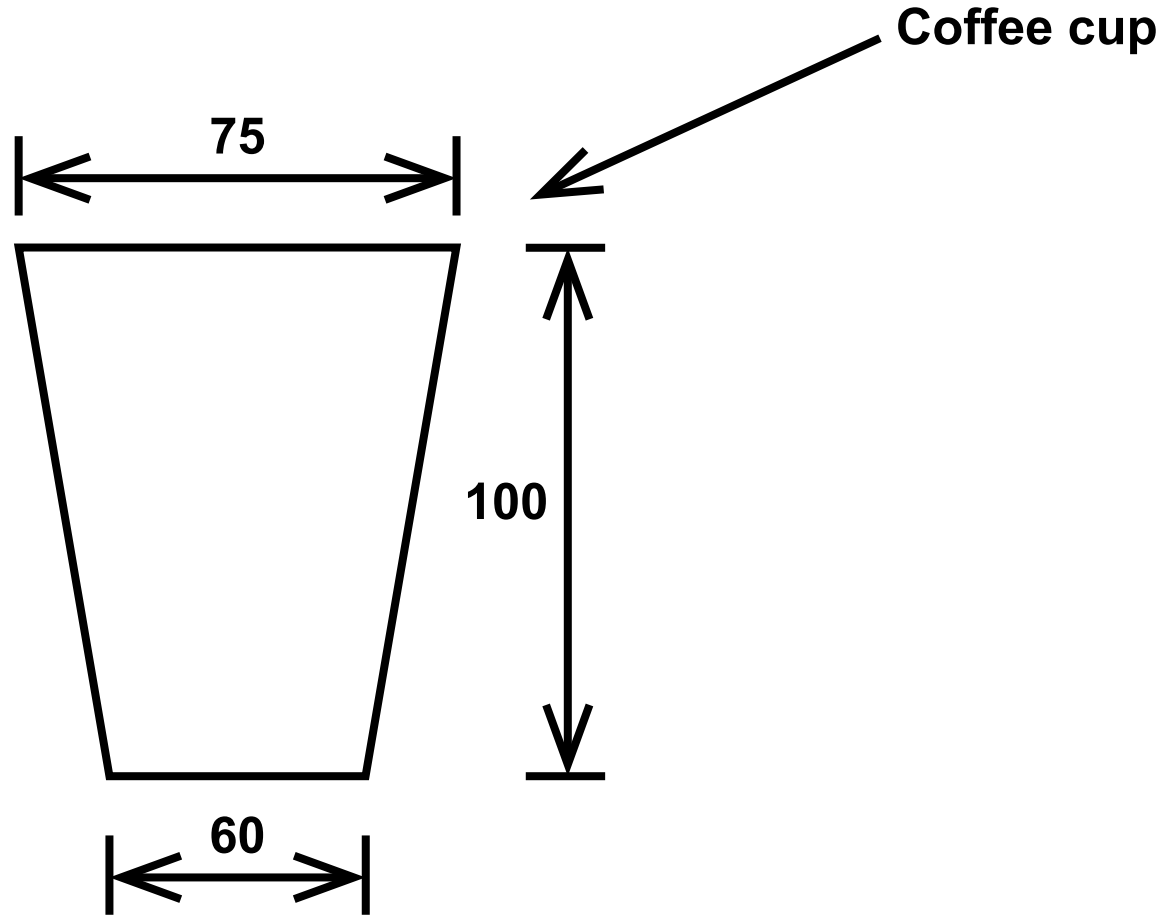


FIGURE 9



Additional information

All dimensions in mm



**QUESTION 5 (a)**

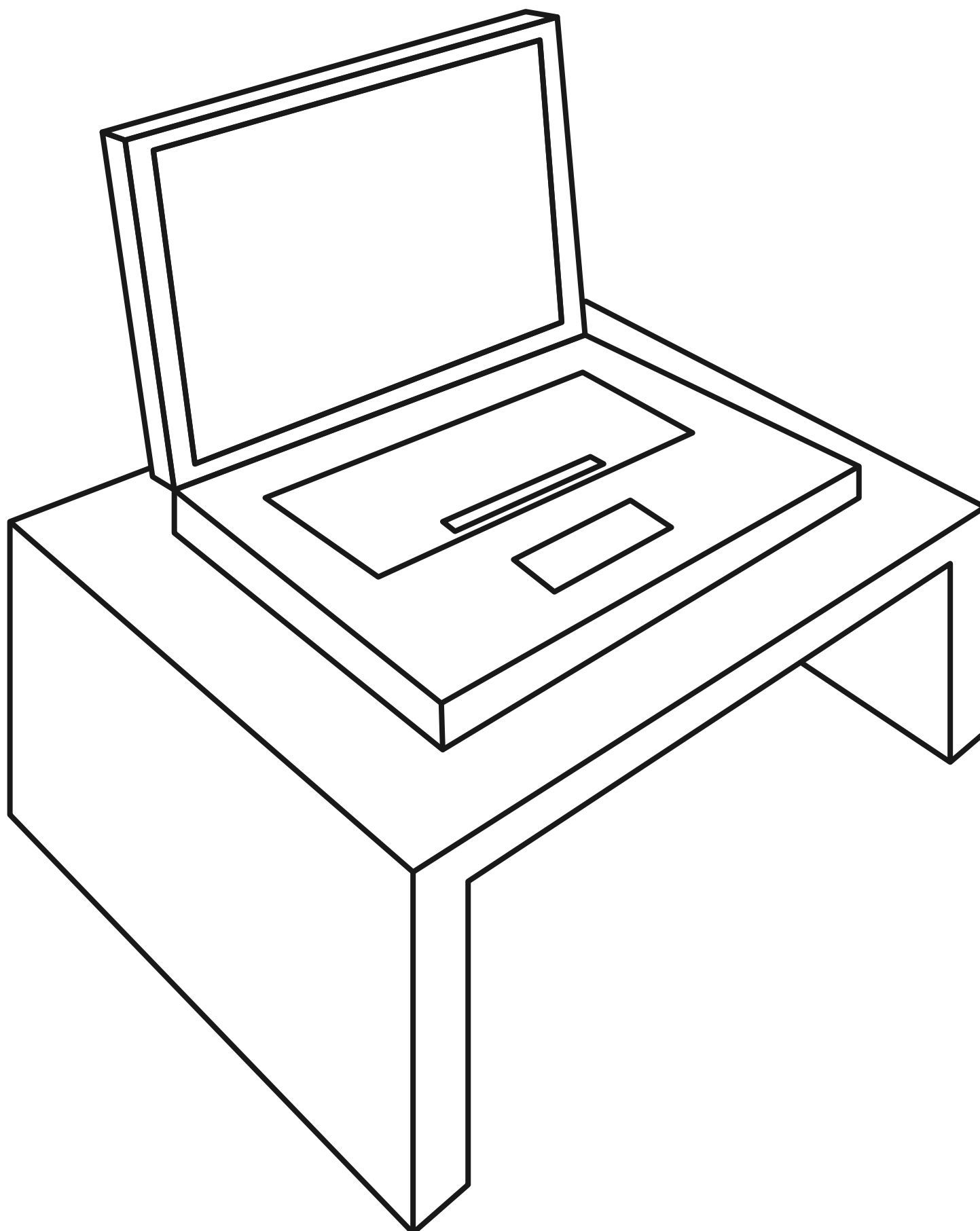


FIGURE 10

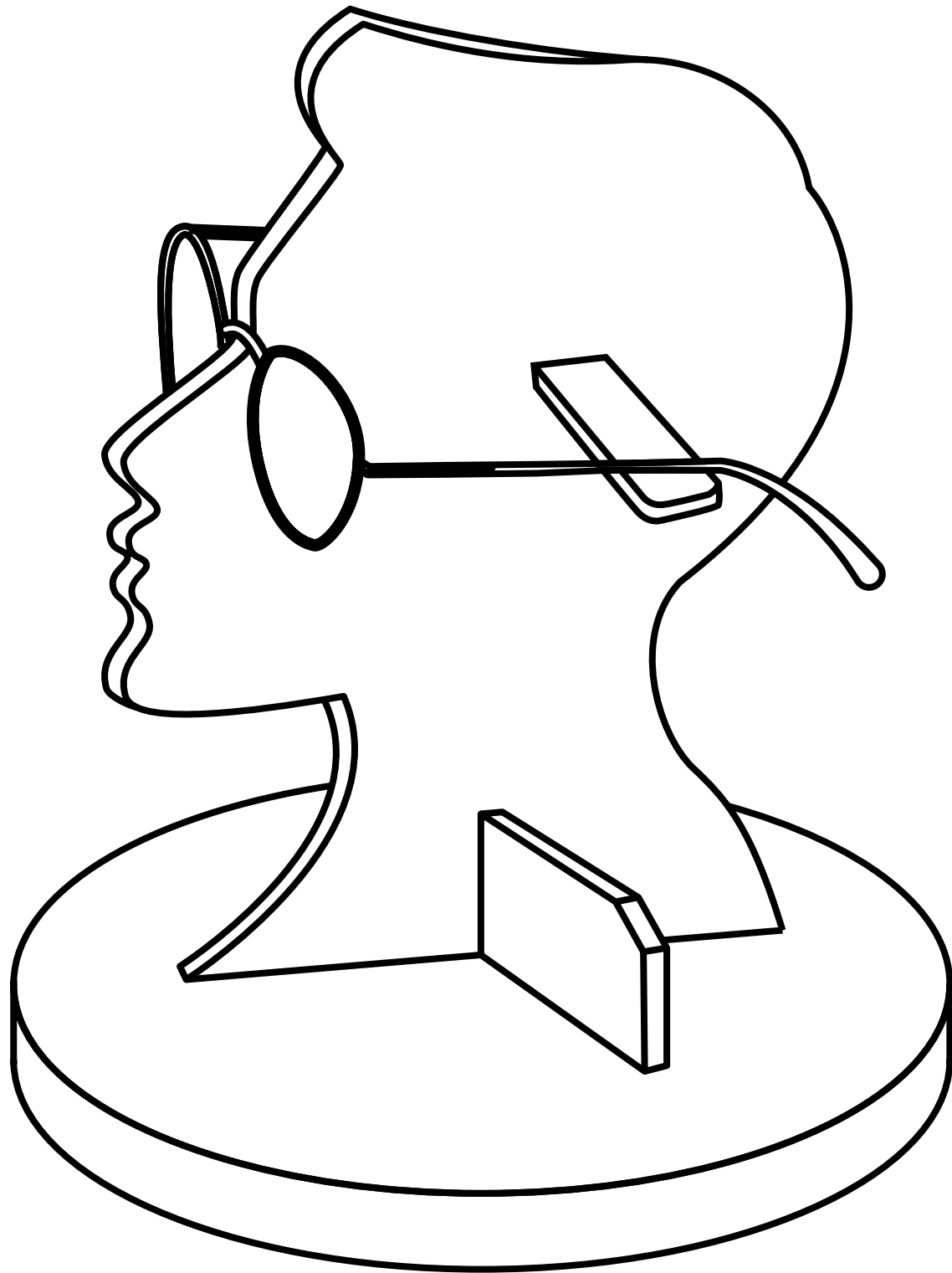


FIGURE 11

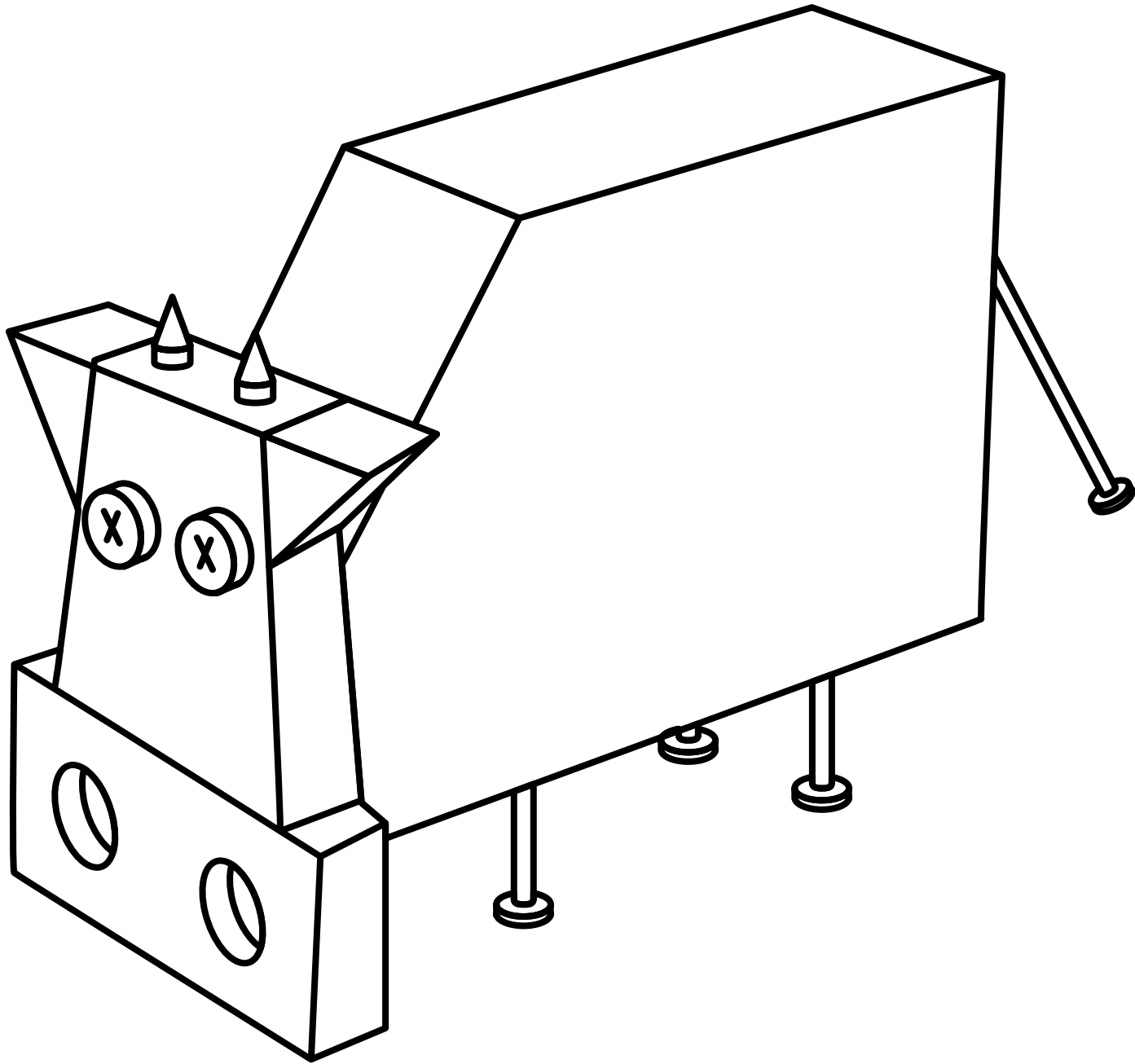


FIGURE 12

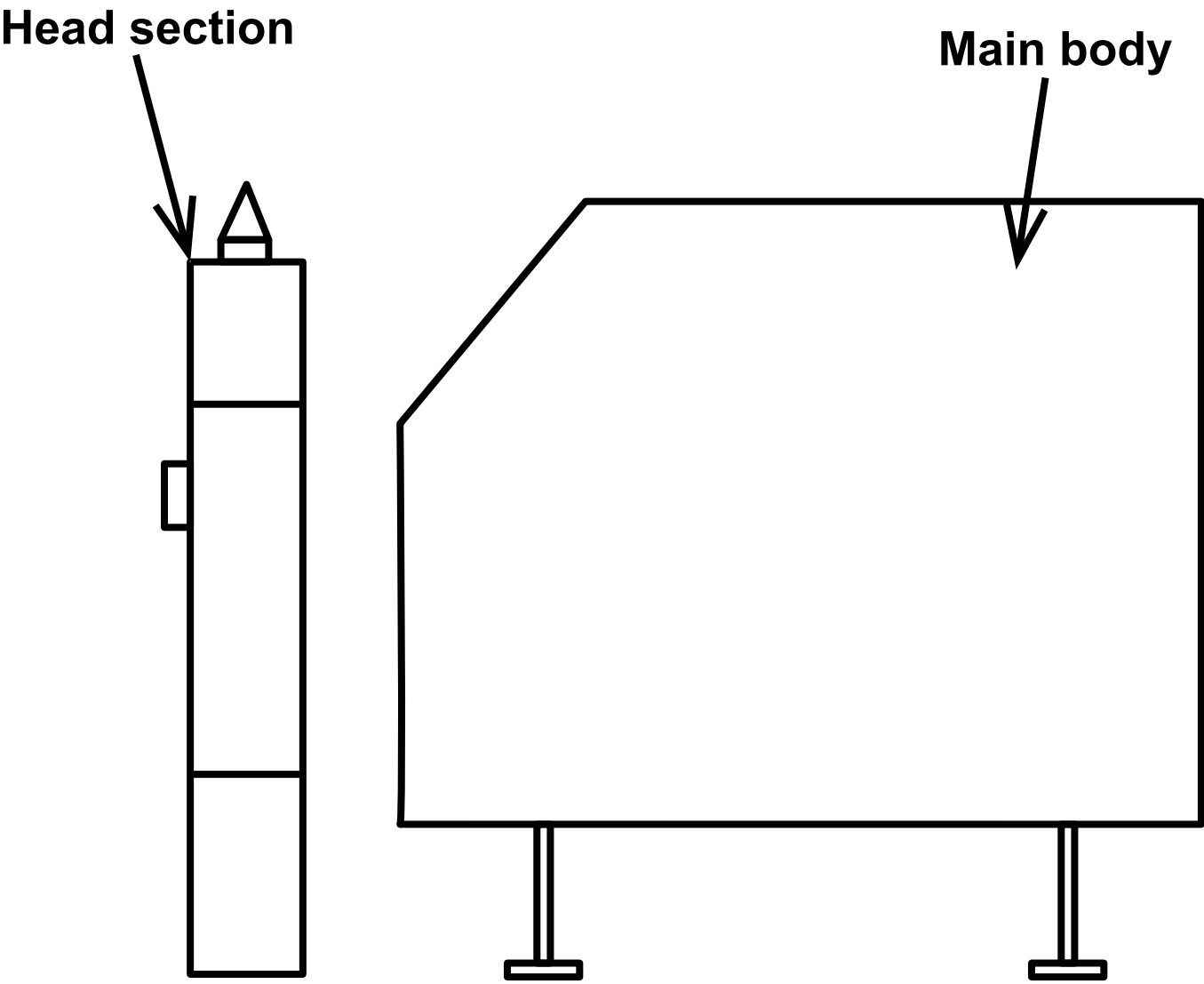


FIGURE 13

All dimensions in mm

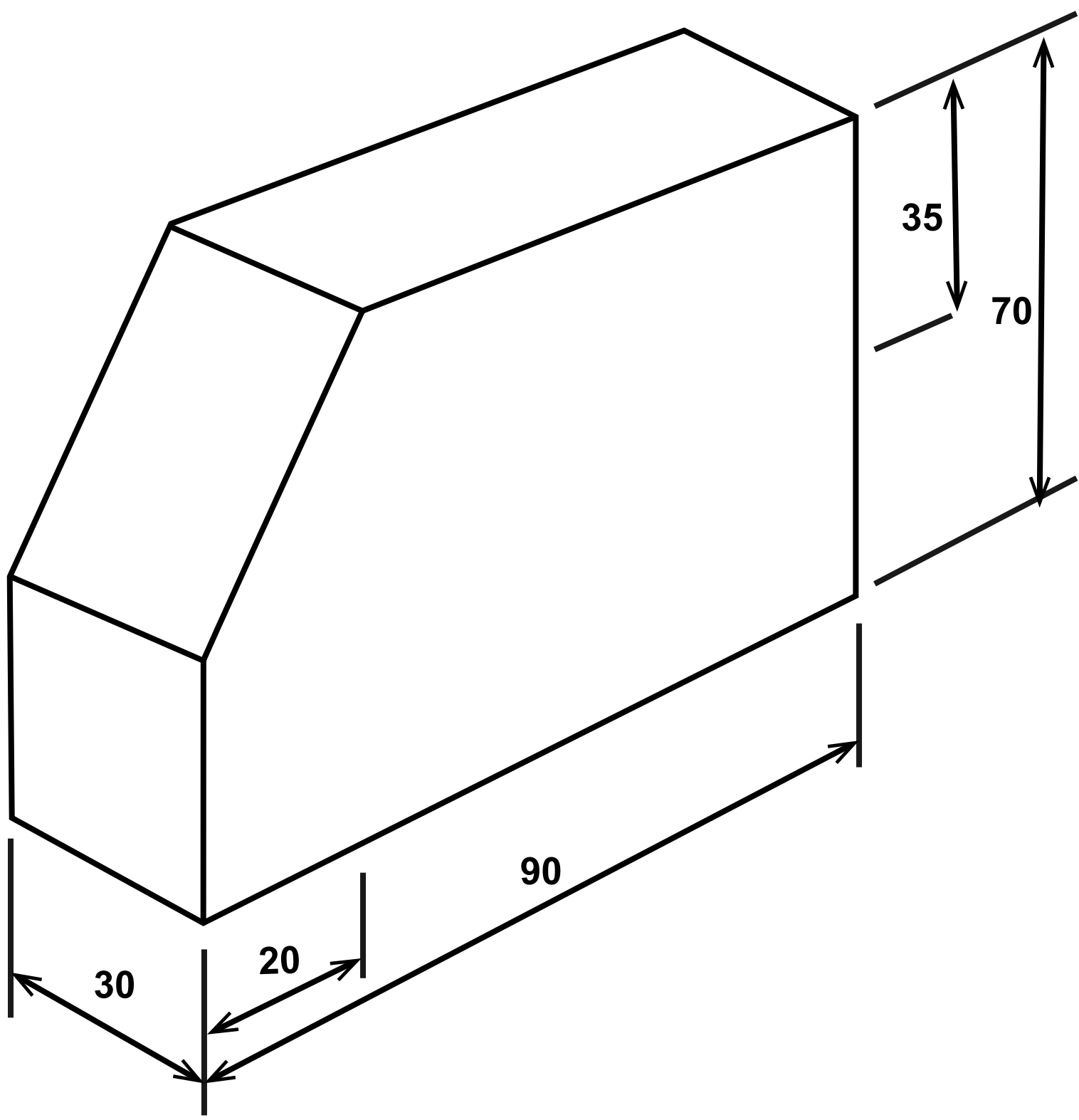
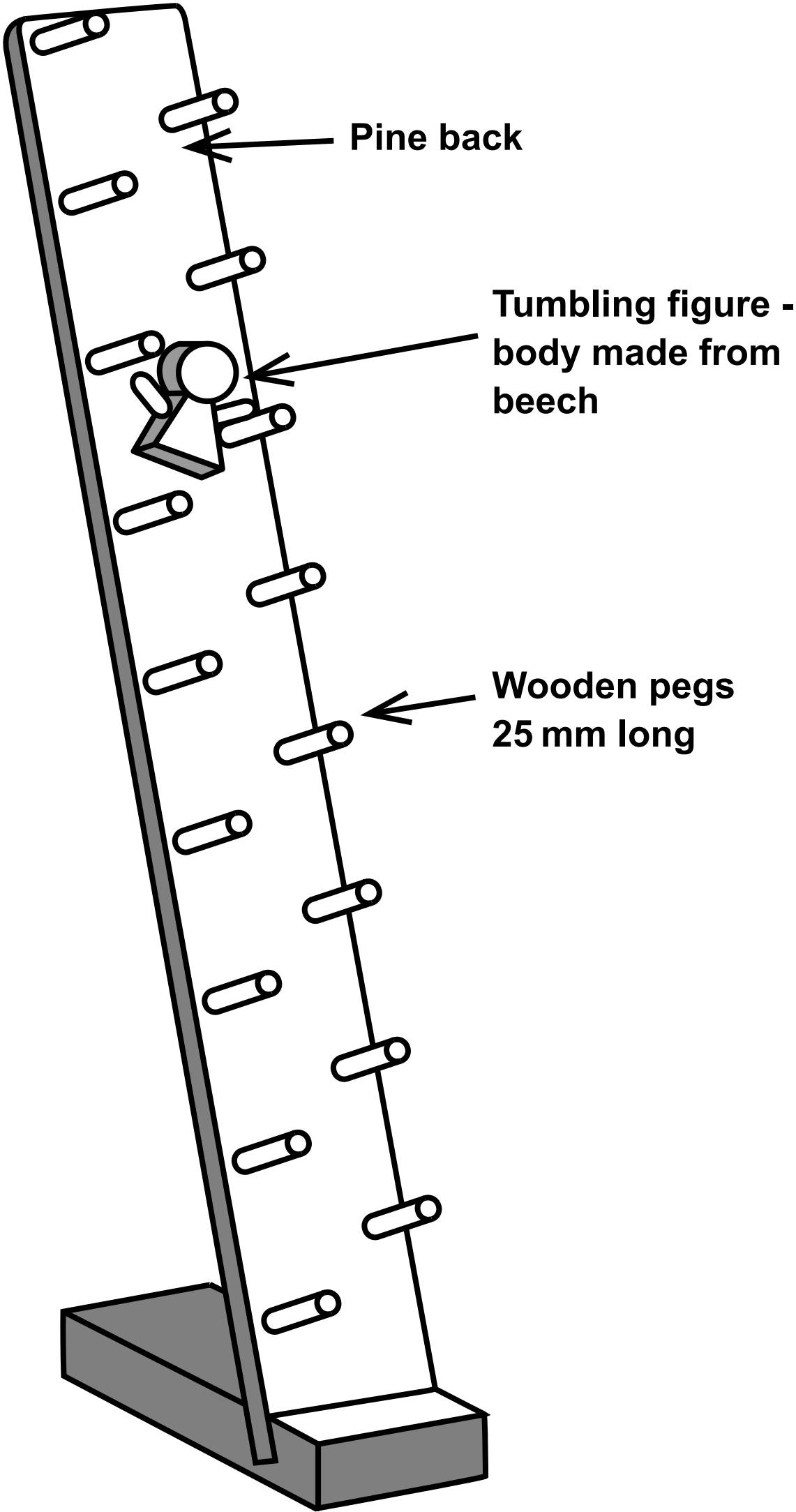


FIGURE 14





**FIGURE 15**

**All dimensions in mm**

**Diagram not to scale**

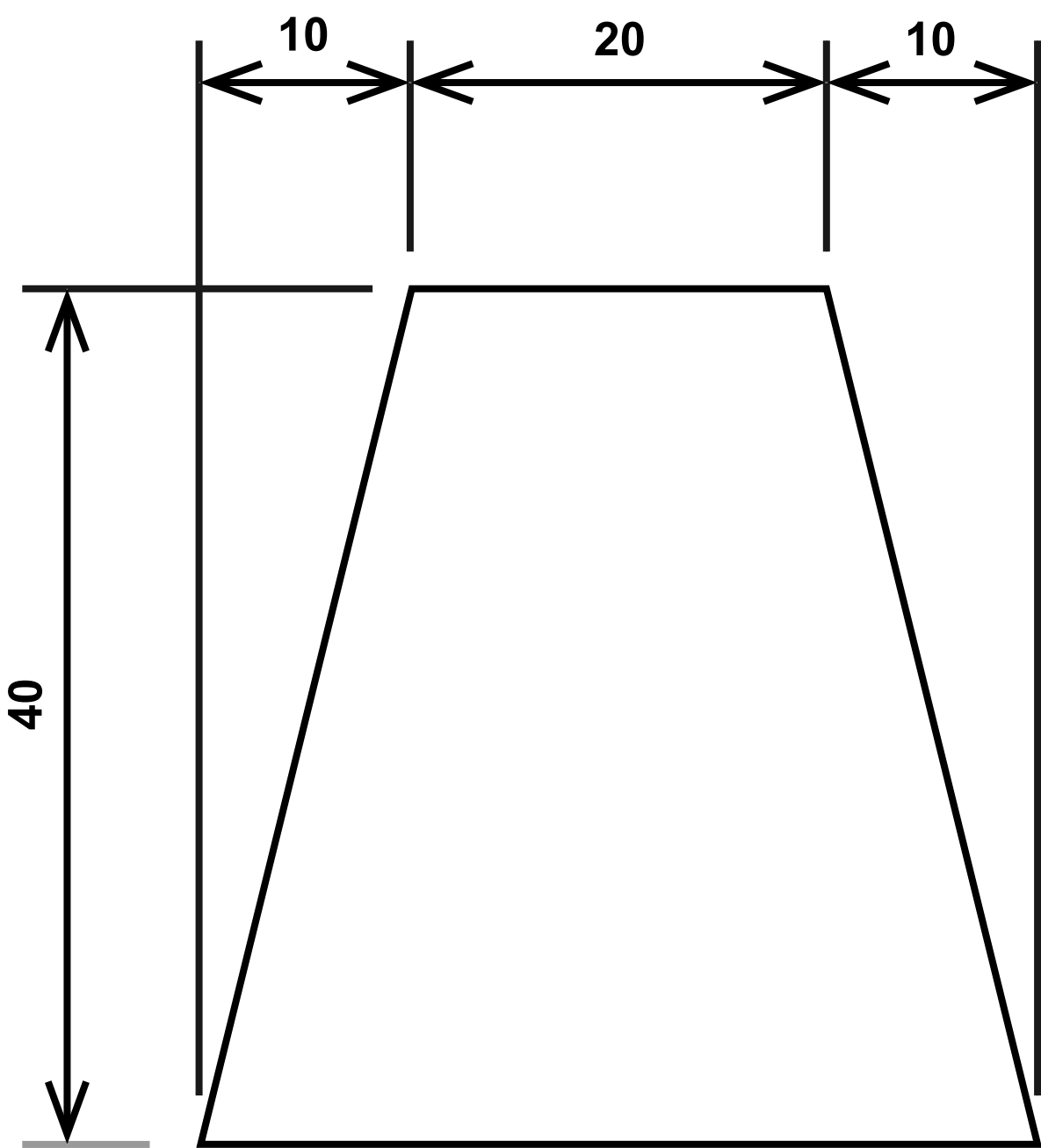
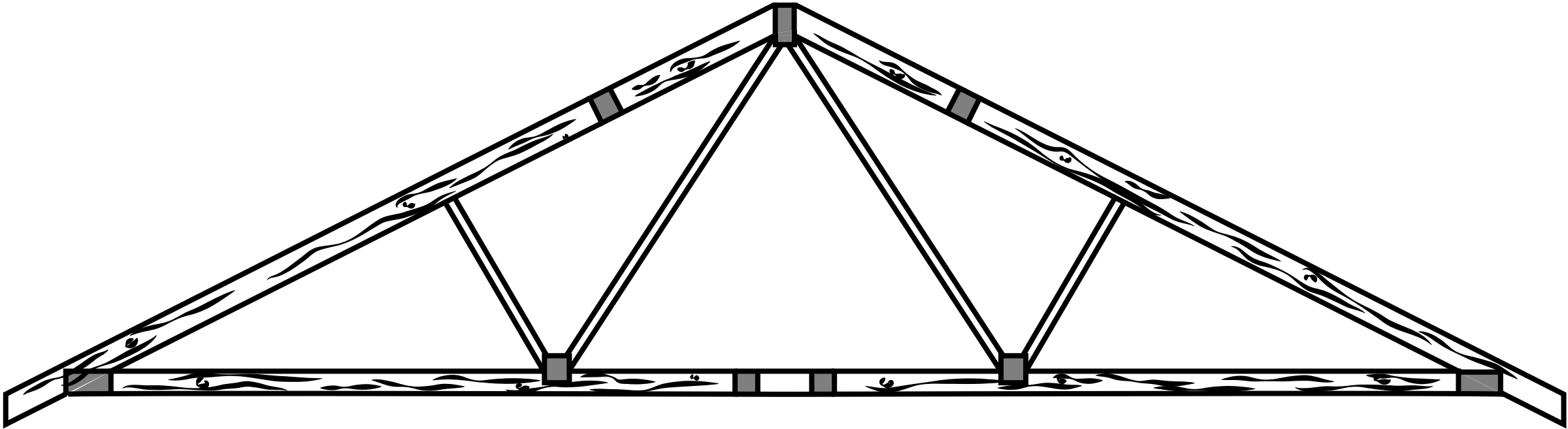


FIGURE 16



**FIGURE 17**

<b>SCALE OF PRODUCTION</b>	<b>Mass</b>
<b>MATERIAL</b>	<b>Pine</b>
<b>MATERIAL SOURCE</b>	<b>Alpine forests</b>
<b>SIZE</b>	<b>6m long 3m high</b>
<b>SURFACE FINISH</b>	<b>Fireproof coating</b>